



# Free or Low Cost Child Care

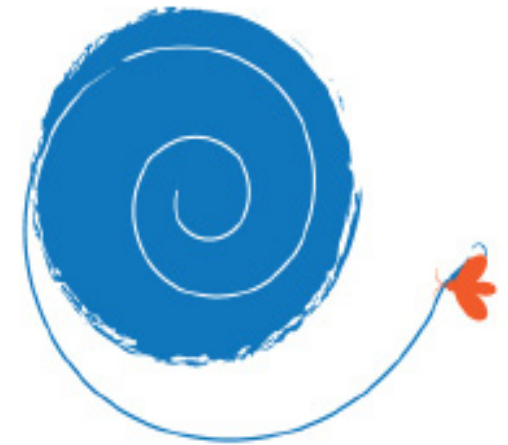
Liberty Community Child-care Center is a 2-Star Step Up to Quality program that provides high quality education to children ages 6 weeks to 6 years.

At Liberty Community Child-care Center we provide year round childcare and financial assistance for qualifying families. If you are not eligible for Title XX dollars you may be eligible for our in-house financing.

Our Liberty 4Kids program works to insure that income doesn't get in the way of a good early education.

[www.delawarelcc.org](http://www.delawarelcc.org)

**LCC Childcare Center**  
207 London Road  
Delaware, OH 43015



LIBERTY  
4KIDS FUND

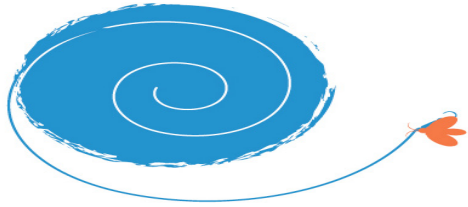
"Sometimes all you need is a longer line"



(Contact us for more information)

**(740) 369-3876**





# LIBERTY 4 KIDS FUND

Many of us know the saying: “If you give a man a fish, he will eat for a day, but if you give him a fishing pole he will eat for a lifetime.”

What happens when the line is not long enough? Childcare has become an obstacle for families and many children are left with friends, family or neighbors. Many Delaware families work every day but cannot afford quality childcare for their children. Cuts in childcare subsidies leave many working families struggling to find additional funds to pay for quality care. Liberty goal is to prepare children to be ready for school. Through the generosity of United Way, Liberty Community Center can serve as a resource for these families.

### Liberty 4 Kids Fund Criteria:

- Do not qualify for Title XX funds.
- Assistance to families up to 250% over the poverty guidelines, or Child 3-5yrs, meeting certain qualifications, up to 300% of Poverty guidelines
- Children 6 weeks - 6 yrs, are eligible to apply for an in house subsidy

### LCC families receive:

- Caring and educated staff
- Low class room ratios
- Field trips
- New designed infant care program
- Safe secure quality environment
- Nutrious meals and snacks
- Spanish curriculum for Pre-Schoolers
- Hands on learning environment



### Federal Income Guidelines

Persons in Family	Poverty Guideline	130% of Poverty	200% of Poverty	300% of Poverty
1	\$10,830	\$14,079	\$21,660	\$32,490
2	\$14,570	\$18,941	\$29,140	\$43,710
3	\$18,310	\$23,803	\$36,620	\$54,930
4	\$22,050	\$28,665	\$44,100	\$66,150
5	\$25,790	\$33,527	\$51,580	\$77,370
6	\$29,530	\$38,389	\$59,060	\$88,590
7	\$33,270	\$43,251	\$66,540	\$99,810
8	\$37,010	\$48,113	\$74,020	\$111,030

For families with more than 8 persons, add \$3,740 for each additional person to find the federal poverty level.

